



SMITH Ceramic Garden Sculpture

Bowls and Plinths

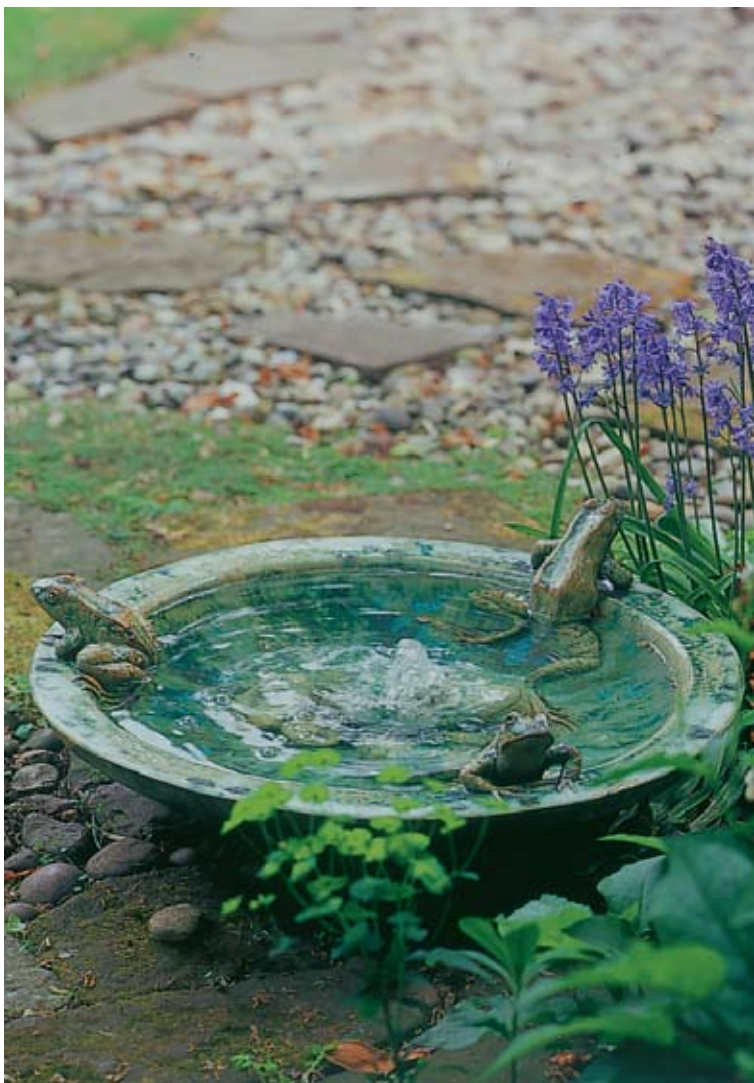


Left: Circular Lizard Bowl and Lizard Plinth (Bowl CB18: dia 70cm, Bark. Plinth CBP18: height 73cm, Bark) Photo: Rachel Warne

Above: Detail of Lizard Plinth (CBP18, Dark Verdigris)

Below: Plain Bowl (CB46: dia 70cm, Marble Green) Photo: Rachel Warne





Left: Circular Frog Bowl (CB19: dia 70cm, Marble Green)
Photo: Rachel Warne

Above: Detail (CB19: Marble Green) Photo: Rachel Warne

Pots and Pools



Above: Otter Pots

Large Otter Pot (OP48: ht 69cm, Graphite)

Medium Otter Pot (OP49: ht 58cm, Graphite)

Small Otter Pot (OP50: ht 51cm, Graphite)

Photo: Rachel Warne

Right: Detail (Graphite) Photo: Rachel Warne



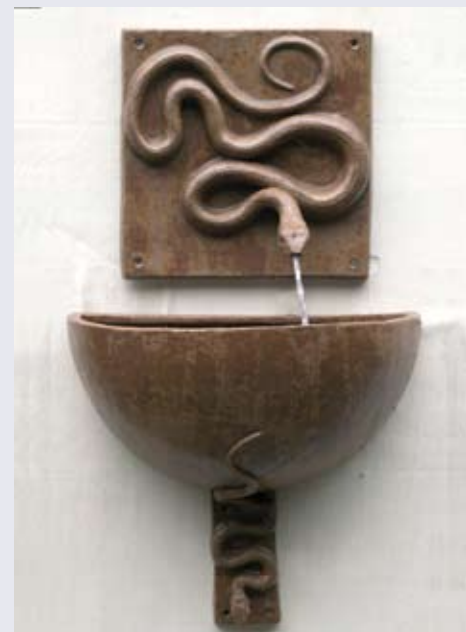


Left: Shallow Frog Pool (SFP54: dia 47cm, Marble Green) Photo: Rachel Warne

Above : Birch Pools. Below: Detail. Photos: Rachel Warne
Tall Birch Pool (BP51: ht 50cm, Sand)
Medium Birch Pool (BP52: ht 35cm, Sand)
Low Birch Pool (BP53: ht 21cm, Sand)



Wall Fountains



Left: Large Fish Wall Spout
(FWM17: 66cm x 32cm, Marble Green)
Centre: Lizard Fountainhead
(RTF2: 51cm x 36cm, Bark)
Lizard Bowl (FB11: 48cm x 23cm x 24cm, Bark)
Lizard Bracket (20cm x 9cm, Bark)
Top Right: Snake Fountainhead
(SF5: 35cm x 35cm, Rust)
Snake Bowl (FB10: 50cm x 25cm x 28cm, Rust)
Snake Bracket (20cm x 9cm, Rust)



Top Left: Lizard Fountainhead,
 (SF4 : 35cm x 35cm, Stone)
 Lizard Bowl (FB11: 48cm x 23cm x 24cm, Stone)
 Lizard Bracket (20cm x 9cm, Stone)
 Bottom Left: Large Frog Wall Spout
 (FWM16: 30cm x 30cm, Marble Green)
 Above: Fish Fountainhead
 (RTF1: 49cm x 36cm, Marble Green)
 Bowl (FB8: 50cm x 25cm x 28cm, Marble Green)
 Fish Bracket (20cm x 9cm, Marble Green)
 Right: Iris Fountainhead
 (PF32: 85cm x 45cm, Acropolis)
 Iris Bowl (FB43: 34cm x 66cm x 32 cm, Acropolis)
 Iris Bracket (26cm x 15cm, Acropolis)

Ball Fountains



Left: Lizard Ball Fountain and Box Plinth
Lizard Ball Fountain (LBF42: 61cm x 42cm, Bark)
Box Plinth (BB44: 151cm x 54cm x 54cm, Bark)
Above: Detail (LBF42, Bark)

Right: Frog Ball Fountain
Large, rear (FBF31: 49cm x 49cm x 61cm, Marbled Greer)
Medium, centre left (FBF40: 34cm x 34cm x 39cm, Marbled Greer)
Small, front (FBF41: 28cm x 28cm x 28cm, Marbled Greer)



Wall Plaques



Left: Plantain (WP36: 74cm x 37cm, Sand)
Above: Rabbit (WP26: 50cm x 31cm, Savannah)
Right: Daffodil (WP35: 74cm x 37cm, Travertine)
Below: Jumping Frog (WP25: 50cm x 31cm, Opaline)



Other Works



Far Left: Frog Fountain (FSF15: 34cm x 19cm, Marble Green)

Left: Stone Frog (SF1: 13cm x 13cm x 10cm, Marble Green)

Below Left: Sitting Frog Tile (WT35: 20cm x 20cm x 20cm, Marble Green)

Below: Large Frog Fountain (FSLF45: 42cm x 42cm 29cm, Marble Green)



Lucy's range of fountains, wall plaques and fountain bowls, in glazed fired clay, combine an awareness and respect for our natural world, with an artistic flair for capturing the joy and beauty of her subject.

Each piece is handbuilt in stoneware clay and fired to a high temperature making them frost resistant. The glazes used are chosen to complement wall surfaces and foliage both in the garden and conservatory. Customers can choose from the range of glazes illustrated.

If you need more information, or wish to discuss a particular piece or special commission, please phone Lucy at her studio.

2A RICHMOND ROAD, LONDON E11 4BA
0208 558 4734
www.lucysmith.org.uk